

DOC 8168 ED 6 2014 AMDT 8

CHANGE: MAGNETIC VARIATION UPDATED – MSA MODIFIED

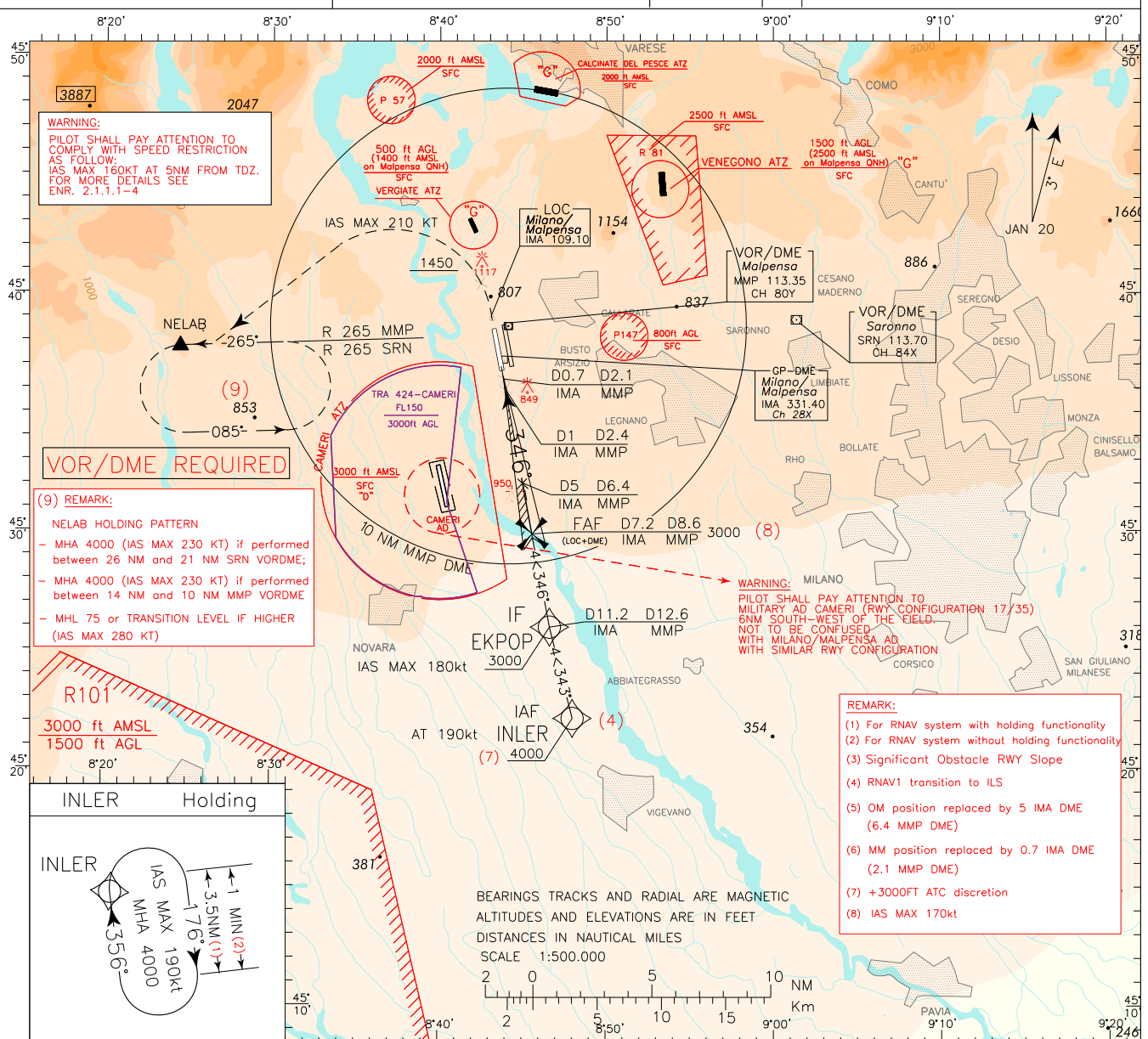
WARNINGS:
Some users on ILS APCH reported false LOC captures. Pilot attention is drawn to pay max caution. See AIP ENR 1.3
Aircraft taxiing independently on TWY H underneath short final RWY 35L.

APP *Milano Radar* CH 125.630 (CH 132.705)
TWR *Malpensa TWR* 128.350
ATIS *Malpensa Arrival Information* 120.025

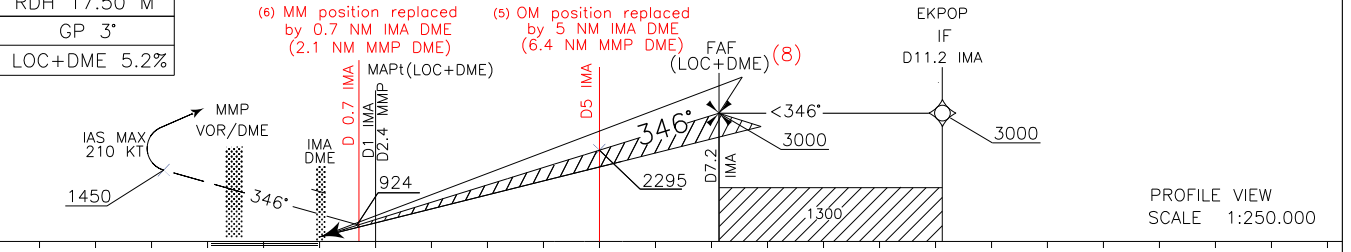
AD ELEV 768

L
I
M
C


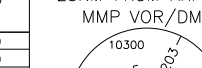
MILANO/MALPENSA
ILS or LOC-Z RWY 35L



TRANSITION ALT 6000
MISSED APPROACH: Proceed on track 346° climbing to 4000 ft. At 1450 ft turn left (IAS MAX 210 kt) to intercept and follow RDL 265 SRN/MMP VOR direct to NELAB holding pattern.
REMARK: Missed approach obstacle clearance is provided by 2.5% gradient; 5% gradient until 2000 ft is required to overfly Vergiate ATZ. Pilots unable to comply with this gradient are advised that will fly within airspace classified "G".



IMA DME	THR ELEV 696	0	1	2	3	4	5	6	7	8	9	10	11	12	13	14	15	16	17	18	IMA DME
MMP DME	0	1	2	3	4	5	6	7	8	9	10	11	12	13	14	15	16	17	18	19	MMP DME

OCA (OCH)		A	B	C	D	<div>CIRCLING SECTORS</div> <div></div>	FT PER MIN	GS	FAP-D5	D5-D0.7	DME IMA	ALT (HGT)	MNM SECT ALT 25NM FROM ARP or MMP VOR/DME
STRAIGHT IN APPROACH	CAT.I (3)	858 (162)	873 (177)	888 (192)	898 (202)		850	160	0 : 50	1 : 40	2	1074 (378)	<div></div>
	CAT.II (1)	762 (66)	777 (81)	787 (91)	807 (111)		740	140	0 : 57	1 : 54	3	1392 (696)	
	LOC+DME	1140 (444)					635	120	1 : 06	2 : 14	4	1711 (1015)	
	CIRCLING	1450 (682)	1650 (882)	1710 (942)	425		80	1 : 39	3 : 20	5	2029 (1333)		
										6	2348 (1652)		
											7	2666 (1970)	
											8	2983 (2287)	
											9		
											10		

(10) 10300 in case of MMP
VOR/DME unavailability

TABULAR DESCRIPTION

ILS Z RWY35L – RNAV TRANSITION TO ILS APPROACH

Serial Number	Path Terminator	Waypoint Identifier	Fly Over	Course °M(°T)	Magnetic Variation	Distance (NM)	Turn Direction	Altitude (ft)	Speed Limit (kt)	VPA/TCH	Navigation Specification
010	IF	INLER	-	-	-	-	-	+4000 (1)	AT 190	-	RNAV 1
020	TF	EKPOP	-	343 (345.9)	-	4.0	-	+3000	-180	-	RNAV 1

(1) +3000ft ATC discretion

Path Terminator	Waypoint Identifier	Inbound Course °M (°T)	Leg Distance (NM) (1)	Timing(min.)/ Waypoint Distance (NM) (2)	Turn Direction	Minimum Altitude (FT)	Maximum Altitude (FL)	Speed Limit (kt)	Magnetic Variation (°)	Navigation Specification
HM	INLER	356 (359.0)	3.5	1.0/ -	R	+4000	-	-190	3	RNAV1

(1) RNAV system with holding functionality

(2) RNAV system without holding functionality